

EverLSS™ 360

EverLSS 360 Mark II is a new

image capturing device

designed to meet strict

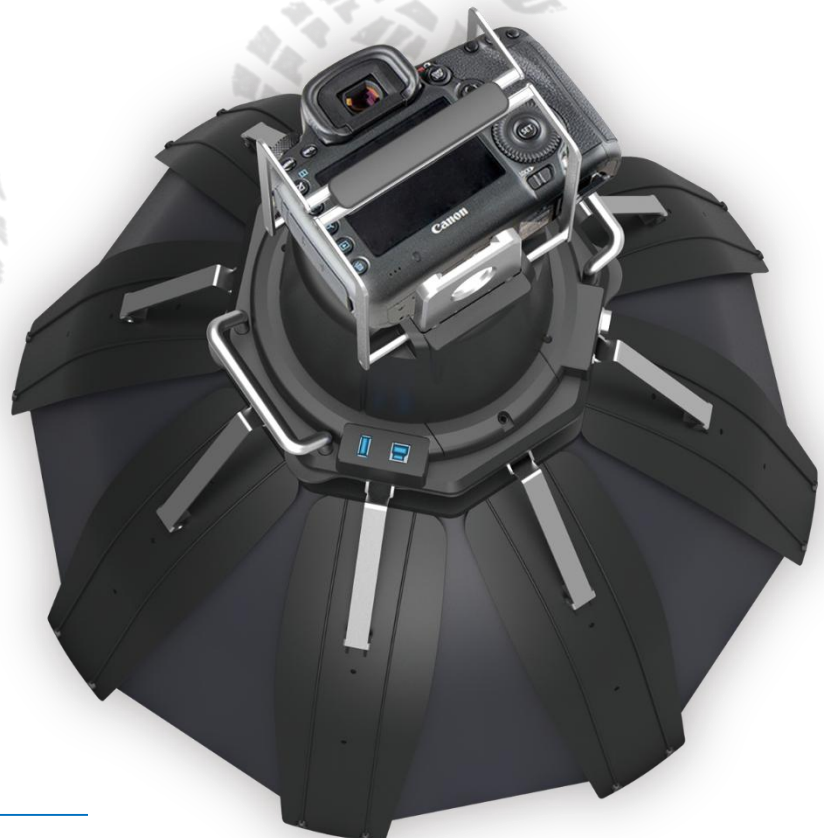
requirements for surface

application, high image quality, data management, and many more

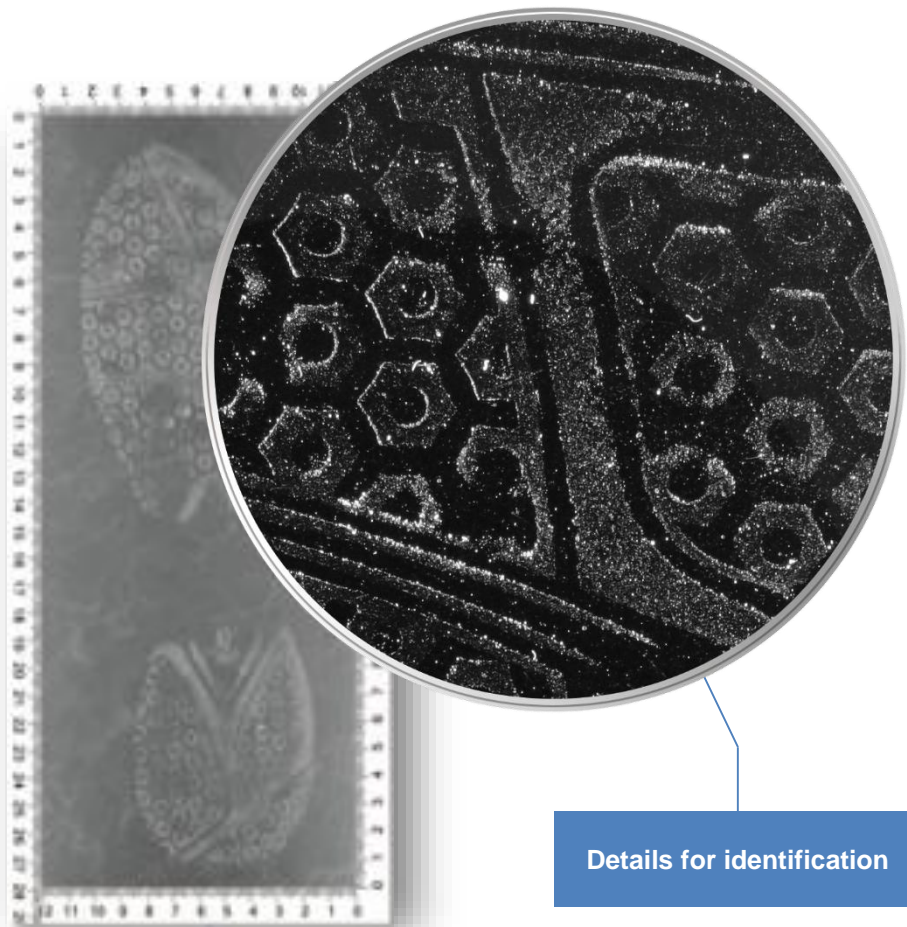
Mark II

FEATURES

- Applicable for various condition
- Circular illumination for 360 degree view
- High shoeprint image resolution
- Detachable imaging system
- Smooth image preview
- Image enhancement
- Multiple lighting mode



Latent
Indented **Visible**
Customized
Digitalized



Details for identification

Captured image is clear and scaled

Circular illumination allows to view shoeprints from 360 degrees

| | |
|-------------------------|---|
| Imaging | Photography |
| Lighting type | LED: 8*8 oblique light, 32 white light; Laser |
| Lighting properties | Oblique light 6000-7000K, white light 6000-6500K, laser 650nm |
| Camera operation method | USB 3.0 |
| LED operation method | USB 2.0 |
| Weight | 7.0 kg |
| Imaging area | 38 cm * 16 cm |
| Power supply | Adapter:100-240 ~50/60 Hz 1.6A (Input); DC 12V 3A (Output) Charger: 8.4V 2A (Output) |
| Working hours | 3 h |
| Charge time | 6 h |
| Battery | 4 x 18650 lithium battery 3400 mah |
| Dimension | Unfold: 60 cm * 60 cm * 55 cm Fold: 30 cm * 30 cm * 62 cm |
| Supported camera | Canon 5DSR, Nikon D800 |
| Lens | 40 mm focal length |